



How can we learn by looking closely?

Analyse → Predict → Check

Physical features

1. Draw a detailed diagram of the whole specimen. Label as many parts as you can.
2. Identify parts and features for:
 - Movement
 - Protection
 - Sound and hearing
 - Seeing
 - Sensing



Movement

1. How was this specimen able to move around? Describe this movement in detail.
2. Describe the movement using descriptive words such as: fast; slow; smooth; jerky; leaping; slithering; waddling; diving; soaring; etc.

Feeding

1. Draw a diagram of the features that the specimen used for feeding.
2. Include features for:
 - Finding
 - obtaining (capturing)
 - preparing and
 - eating food
3. What types of food do you think your specimen eats? What is the evidence to support your ideas?

Protection

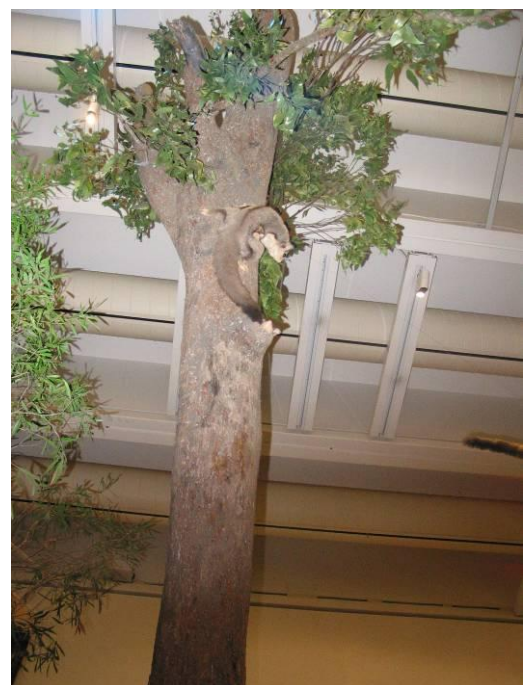
1. How does your specimen protect itself from predators?
2. What is the evidence to support this idea?

Habitat

1. Where do you think this specimen would have lived?
2. What is the evidence to support this idea?

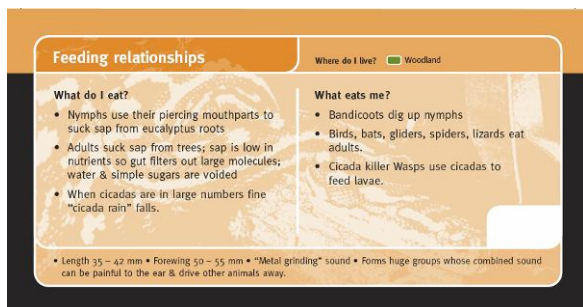
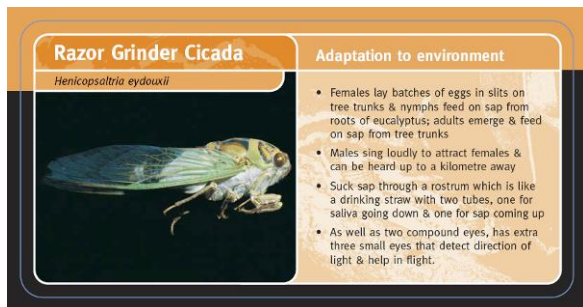
Value

1. What role do you think this specimen plays in its ecosystem?
2. How would the ecosystem be different if this specimen did not exist?



How can we share what you found out?

Prepare an **Information Card** to inform others about your specimen's role in the environment.



What is on the card?

Your card should contain:

1. Name: Common and Scientific names
2. Physical description could include:
 - A photo with some dimensions or
 - A carefully labeled diagram
 - Special features (sound, sensing, etc)
3. Habitat type
4. Adaptations for:
 - a. Movement
 - b. Feeding
 - c. Protection
5. Value or role of your specimen in the environment

How should the card be presented?

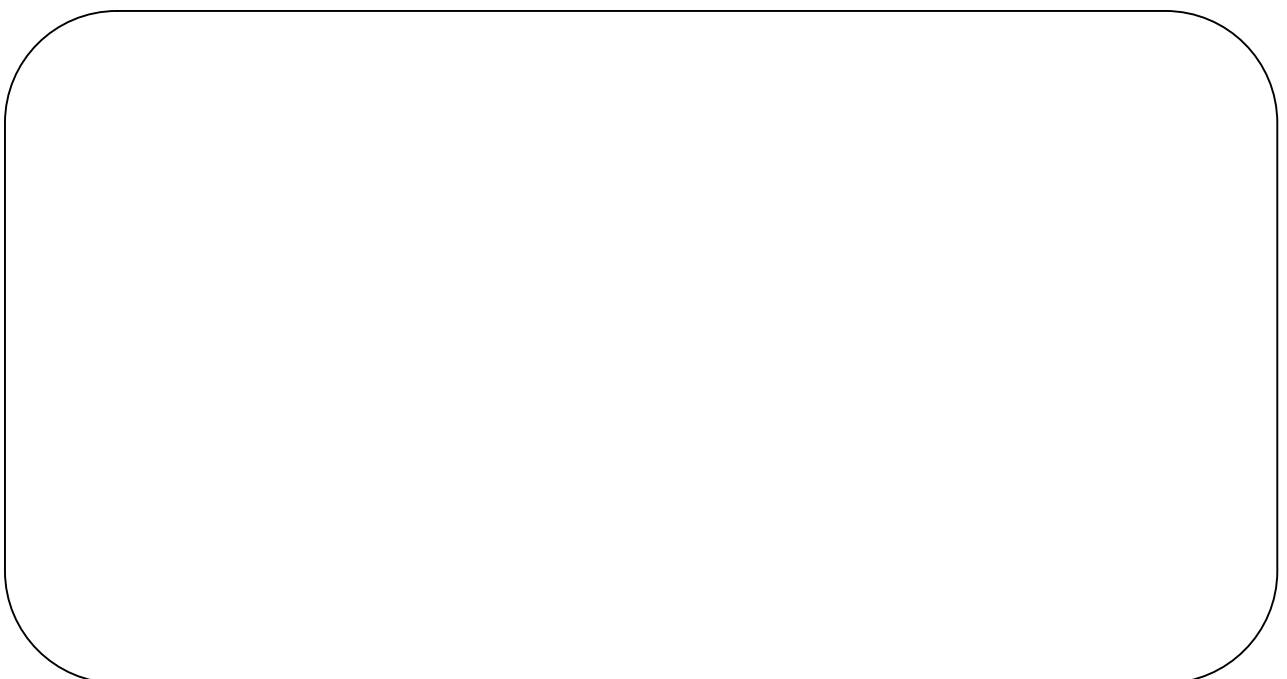
Your card should be presented as a double sided DL (half A4) size sheet.

Include suitable graphics elements such as:

- Layout of graphics and text
- Font sizes and types
- Background graphics
- Borders
- Colour scheme

How do I start?

Draw a rough sketch of the layout here:



Features of Natural Specimens	Observe & Discuss <i>What can you find out about this specimen by using your senses? What can your group find out by talking about this object?</i>	Research <i>What questions would you like to answer about this object?</i>
Habitat Where did it live? Are there clues about what happened during its life or why it died?		
Physical Features Draw its shape and indicate its size, weight, and sound. Is this a complete specimen or part of one?		
Construction What sort of tissues and structures can you find? Is it soft/tough/fragile/solid/delicate?		
Function What did it do in its life? What was the function of various parts? What might have been some of its problems or challenges?		
Design How does its design match its function? Can you see how the design helped with its problems and challenges or helped it survive in its environment?		
Value What is the value of this specimen to the environment? Do other living things depend on this specimen for survival?		